

**TANCO AUTOWRAP
250S MODEL 1996
OPERATORS HANDBOOK
AND
PARTS LIST
WD65-250S-M0396**

GUARANTEE

Subject as hereunder provided, the Sellers undertake to correct either by repair or at their election by replacement any defect of material or workmanship which occurs in any of its goods within twelve months after delivery of such goods to first user, with the exception of contractors or commercial users when warranty period is six months.

In respect of Autowraps the warranty period is for 12 months or 8000 bales which ever occurs first.

In respect of Airways tine breakage will be assessed on an individual basis in every case.

The term goods when used in this document means the article or articles described in invoice as sold by the sellers but does not include equipment or proprietary parts or accessories not manufactured by the sellers. The sellers, however, undertake to pass on so far as they legally can to the first user the benefit of any warranty given to the Sellers by the suppliers of such equipment, parts or accessories.

This understanding shall not apply to:

- (a) Any goods which have been sold by the first user.
- (b) Any goods which have been injured by unfair wear and tear, neglect or improper use.
- (c) Any goods the identification marks of which have been altered or removed.
- (d) Any goods which have not received the basic normal maintenance such as tightening of bolts, nuts, tines, hose connections and fittings and normal lubrication with the recommended lubricant.
- (e) The use of any product on tractors exceeding the recommended horsepower.
- (f) Any goods which have been altered or repaired other than on instruction or with the written approval of the Seller or to which any part not manufactured or having written approval by the Sellers have been fixed.
- (g) Any second-hand goods or part thereof.

Any allegedly defective part or parts returned to the Sellers must be sent carriage paid. No claim for repair or replacement will be entertained unless upon discovery of the alleged defect written notification is sent to the Sellers giving, at the same time, the name of the Buyer from whom the goods were purchased and the date of purchase together with full details of the alleged defect and the circumstances involved, also the serial number of the machine etc.,

The Sellers shall be under no liability to their Buyers and first and subsequent users of their goods or to any other person or persons for loss or damages howsoever arising in respect of either personal injuries or for arising out of, or in any way connected with or arising from the manufacturers sale, handling, repair, maintenance, replacement or use of its goods or the failure or malfunction of any of its goods.

Representation and/or warranties made by any person (including Buyers and employees and other representatives of the Seller) which are inconsistent or conflicting with these conditions are not binding upon the Sellers unless given in writing and signed by a Director of the Sellers.

CLAIMS

If you wish to make a claim under guarantee.

1. Immediately, stop using the machine.
2. List the details of the machine, its serial number and the part number of the damaged part.
3. Consult with your Tanco dealer (supplier) and have him forward your claim and the damaged item to Tanco.

INDEX**250S****PAGE NO.**

GENERAL SAFETY INSTRUCTIONS	1/2/3/4/5
SAFETY INSTRUCTIONS	6
SAFETY DECALS	7
TECHNICAL SPECIFICATIONS	8
PRE-DELIVERY INSTRUCTIONS	9
TRANSPORT INSTRUCTIONS	10
MACHINE IDENTIFICATION	10
PREPARATION OF A NEW MACHINE	11
HYDRAULIC CONNECTIONS	11
RDS SILACOUNT	12/13/14/15/16
	17/18/19
OPERATION INSTRUCTIONS	20
FILM OVERLAP SYSTEM	21
SERVICE AND MAINTENANCE	22/23
FILM THREADING DIAGRAM	24
GEARBOX CHAIN DRIVE TENSIONING SYSTEM	25
TURNTABLE CHAIN DRIVE TENSIONING ASSEMBLY	26
FILM ADAPTOR OPERATING INSTRUCTIONS	27
HYDRAULIC CIRCUIT DIAGRAM (250S MODEL)	28
HYDRAULIC COMPONENTS ILLUSTRATED	29
PARTS LIST FOR ABOVE	29:1
CONSTANT INDEXING DRIVE ASSY ILLUSTRATED	30
PARTS LIST FOR ABOVE	30:1
AUTOWRAP ILLUSTRATED (250S MODEL)	31
PARTS LIST FOR ABOVE	31:1
TURNTABLE CHAIN DRIVE ASSY ILLUSTRATED	32
PARTS LIST FOR ABOVE	32:1
FILM DISPENSING SYSTEM ILLUSTRATED (250S MODEL)	33
PARTS LIST FOR ABOVE	33:1
FILM DISPENSING SYSTEM ILLUSTRATED (250S7 MODEL)	34
PARTS LIST FOR ABOVE	34:1
TURNTABLE LOCKING ARRANGEMENT	35
PARTS LIST FOR ABOVE	35:1
FAULT FINDING SUMMARY	36

FIG 1 - PAGE No. 24

FIG 2 - PAGE No. 25

FIG 3 - PAGE No. 25

FIG 8 - PAGE No. 26

GENERAL SAFETY RECOMMENDATIONS

Before operating the machine, always ensure that the tractor and machine meet with work safety and road traffic regulations.

BASIC PRINCIPLES

- 1: In addition to the recommendations given in this manual, legislation on work safety and accident prevention must also be respected.
- 2: Advice is indicated on the machine, specifying safety recommendations in order to prevent accidents.
- 3: Before travelling on public roads, the operator must ensure that the machine conforms to road traffic regulations.
- 4: Before starting work, the operator must be familiar with all machine controls, handling devices and their functions. Once at work, it is too late to do this!
- 5: Do not wear loose clothing which could become caught up in moving elements.
- 6: The tractor should be equipped with a safety cab.
- 7: Before starting up the machine and beginning work, check the surrounding area (beware of children!). Make sure there is sufficient visibility. Keep all people and animals away from the danger zone of the machine (risk of projection!).
- 8: Carrying people or animals on the machine when working or in transport is strictly forbidden.
- 9: Machine must only be attached to tractor using means provided and in accordance with current safety standards.
- 10: Special care should be taken when attaching or removing the machine from the tractor.
- 11: Before transporting the machine on public roads, ensure that all legally required guards and indicators (lights, reflectors ...) are in place and in good operation.
- 12: All operating controls (cords, cables, rods etc.) must be positioned so that they cannot be set off accidentally, risking accident or damage.
- 13: Before travelling on public roads, put the machine into its transport position as instructed in this operators manual.
- 14: Never leave the tractor seat while the machine is operating.

- 15: Drive speed must be adapted to ground conditions as well as to roads and paths. Always avoid abrupt changes of direction.
- 16: Before operating the machine, ensure that all safety guards are firmly in place and in good condition. If worn or damaged, replace immediately.
- 17: Before operating the machine, check the tightness of all nuts and bolts, particularly on fixing elements (blades, tines, knives, spades etc.,).
- 18: Keep clear of the machine operating area.
- 19: **WARNING!** Danger of crushing and shearing can exist when components are operated by hydraulic or pneumatic controls.
- 20: Before leaving the tractor or before adjusting, maintaining or repairing the machine, turn off the engine, remove the ignition key and wait until all moving parts have come to a complete stop.
- 21: Do not stand between the tractor and the machine unless the hand brake is tight and/or stops have been placed under the wheels.
- 22: Before any adjustments, maintenance or repairs are carried out, ensure that the machine cannot be started up accidentally.

ADDITIONAL RECOMMENDATIONS FOR LINKAGE MOUNTED MACHINES

- 1: Before attaching the machine, ensure that the front tractor axle is sufficiently ballasted. Ballast is to be placed on the supports provided in accordance with instructions of the tractor manufacturer.
- 2: Do not exceed the maximum axle load or the overall transport weight prescribed by the tractor manufacturer.
- 3: Precision steering, tractor adherence, road holding and efficient braking are influenced by the type of implement, weight, ballast of front axle, ground or road conditions. It is therefore of utmost importance to be cautious in every given situation.
- 4: Be particularly cautious when turning corners, paying attention to machine overhang, length, height and weight.

SAFETY RECOMMENDATIONS FOR ATTACHING IMPLEMENTS TO TRACTOR

- 1: When attaching or removing the machine from the tractor, position hydraulic lift control lever in such a way that it cannot be set off accidentally.
- 2: When attaching the machine to the tractor hydraulic linkage, ensure that diameter of the link pins corresponds to the diameter of the ball joints.
- 3: **WARNING!** Danger of crushing and shearing can exist in the lifting zone of the tractor hydraulic linkage!
- 4: Do not stand between the tractor and the machine when operating the outer lever of the lift mechanism.
- 5: In transport, the machine lift mechanism should be stabilized by tractor tie rods to avoid floatation and side shifting.
- 6: When transporting the machine, lock the hydraulic lift control lever in place so that it cannot be lowered accidentally.

HYDRAULIC SYSTEM

- 1: **WARNING!** Hydraulic system is under pressure.
- 2: When fitting hydraulic motors or cylinders, ensure that connections have been made correctly, as per manufacturers instructions.
- 3: Before connecting hoses to the tractor hydraulics, ensure that tractor and machine circuits are not under pressure.
- 4: It is strongly recommended that the operator marks the hydraulic connections between tractor and machine to avoid making a wrong connection. **WARNING!** Functions could be reversed (for example: lift/lower).
- 5: Check hydraulic hoses regularly! Worn or damaged hoses must be replaced immediately. Replacement parts must be in accordance with the manufacturers recommendations concerning specifications and quality.
- 6: Should a leak be found, take all necessary precautions to avoid accidents.
- 7: Any liquid under pressure (particularly oil from hydraulics) can penetrate the skin and cause severe injury. If injured, see a doctor immediately, there could be a danger of infection.
- 8: Before any adjustments, maintenance or repairs are carried out, lower the machine, depressurize the circuit, turn off the engine and remove the ignition key.

MAINTENANCE

- 1: Before checking for any machine malfunction and before adjusting, maintaining or repairing the machine, turn off engine and remove ignition key.
- 2: Check tightness of nuts and bolts regularly. Retighten if necessary.
- 3: If the machine is raised, prop it up in a stable position before carrying out any maintenance work.
- 4: When replacing a working part, wear protection gloves and use only standardized tools.
- 5: It is forbidden to discard any oil, grease or filters. These must be given to waste disposal organisations to protect the environment.
- 6: Disconnect power source before any work is done to the electric system.

- 7: Check safety guards regularly, particularly those that are subject to wear. Replace immediately if damaged.
- 8: Spare parts used must be in accordance with specifications and standards as defined by the manufacturer. Use only genuine TANCO parts.
- 9: Before any electric welding is carried out on tractor or attached machine, disconnect generator and battery terminals.
- 10: Repairs on elements under pressure or tension (springs, accumulators etc.) must only be carried out by competent persons with standardized equipment.

OPERATING SAFETY INSTRUCTIONS

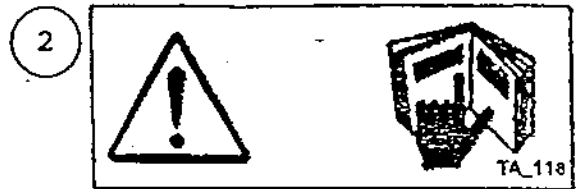
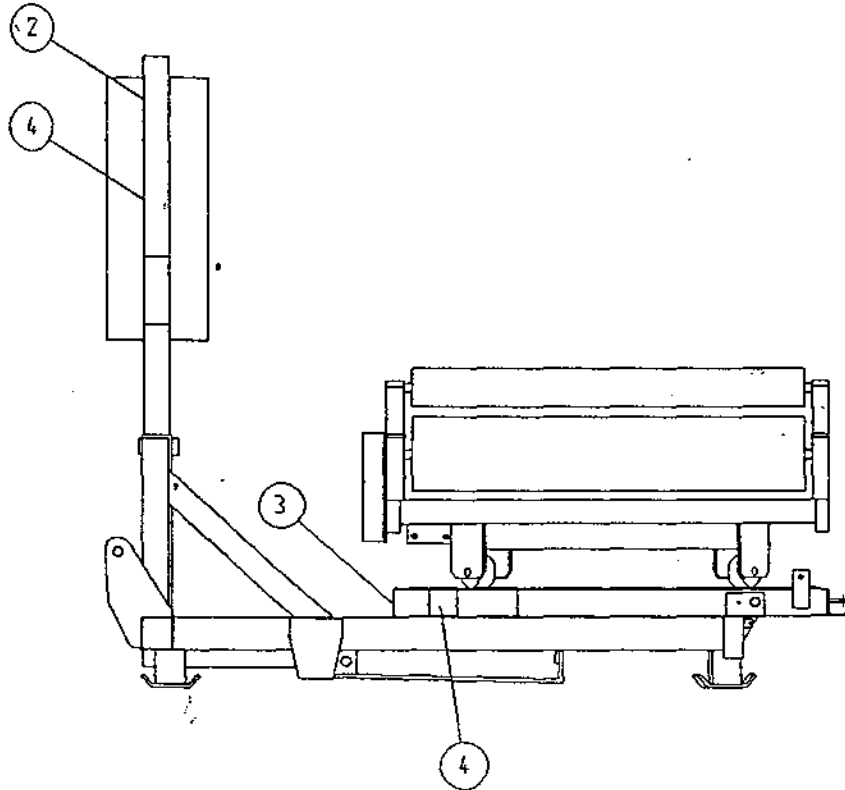
1. Operators should have their hands on the controls at all times when machine is in use.
2. Autowrap control unit and level controls must remain in the tractor cab at all times. The operator must at no time leave the tractor cab when the machine is in motion.
3. Keep onlookers clear of machine at all times. Danger zone is 5 metres.
4. Beware of rotating turntable and all moving parts.
5. If not operated correctly the bale could fly off the turntable. The end support rollers must always be fitted. Do not exceed recommended turntable speed of 30 r.p.m. Misshapen bales combined with excessive turntable speeds can be dangerous.
6. Care must be taken when tipping bales from machine on sloping ground and during subsequent handling to ensure that they do not roll, thus causing hazard.

THINK OF YOUR PERSONAL SAFETY AND THAT OF OTHERS AT ALL TIMES.

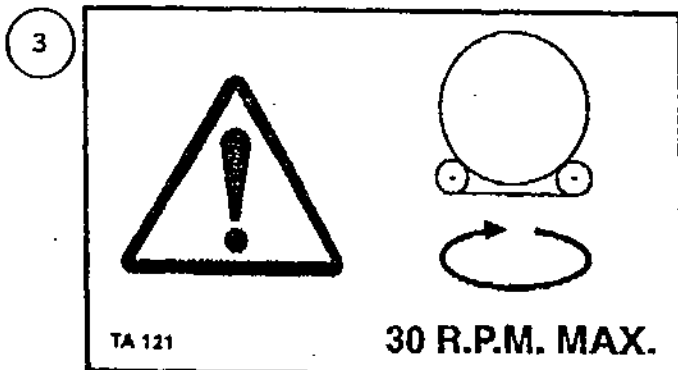
SAFETY DECALS

The following safety decals have been placed on your machine in the areas indicated. They are intended for your personal safety and for the safety of the people working with you. With this manual, walk around your machine and note the content and location of these warning signs. Review these decals and the operating instructions in the manual with your machine operators.

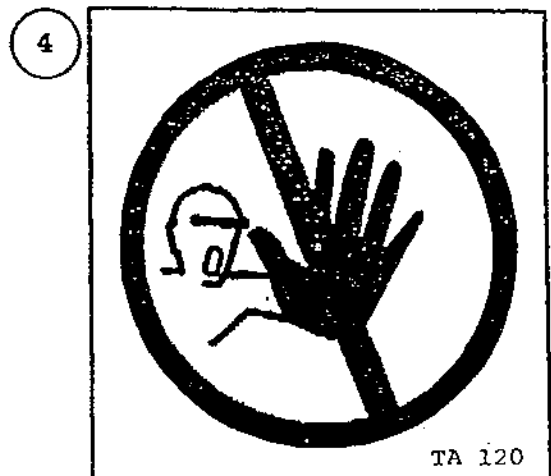
Ensure that these decals are always legible. If they are not, replace them.



BEFORE STARTING THE
MACHINE READ OPERATORS
MANUAL AND SAFETY
INSTRUCTIONS



DO NOT EXCEED TURNTABLE
SPEED OF 30 R.P.M



DANGER STAND CLEAR

TECHNICAL SPECIFICATIONS

250S Model
(3 point
linkage)

Dimensions

Total length - Excluding Ramp	208 cm
Width with arm raised	210 cm
Height to top of side (bale guide) rollers	100 cm
Height to top of side arm	210 cm

Weight 900Kgs

Speed of turntable 30 rev/min

Oil Replacement 25 litres/min*
(165 kp cm²)

Attachment to tractor Tractor Linkage

Bale Sizes 120 x 120 cm
up to 120cm
x 153 cm max
1000 Kgs

Film (Width of Roll) 500mm
750mm

* The speed of rotation can be varied to suit various conditions but on no account should it exceed 30 r.p.m. (Speeds in excess of 30.p.m. will void warranty).

PRE-DELIVERY INSTRUCTIONS

1. Check that machine complies with customers requirements.
2. Check tightness of all nuts and bolts.
3. Grease all lubrication points making sure index rollers and sprockets are greased.
4. If for operation with a John Deere tractor, ensure valve is converted to closed centre.
5. If for operation by Power Pack ensure stabiliser legs are fitted in the two sockets on each side of the main frame at rear of machine.
6. Check that non-return valve is fitted in return line.
7. Check that film dispenser is correctly fitted with marked gear box at top, and that slave roller is adjusted to avoid contact with the gear box covers.
8. Check that all guards are in place.
9. Check that all operation and safety stickers are intact.
10. Check Serial No. plate and note Serial No. of machine for record purposes.
11. Check that bale off loading ramp/mat is fitted.
12. Connect to hydraulic power source and check that everything functions properly and in accordance with instruction stickers.
13. Inform operator of Max speed 30 r.p.m.

TRANSPORT INSTRUCTIONS

1. Never use straps around the machine when lifting. Use only the following lifting points :- 3pt. Linkage frame and two sockets on each side of the main frame at rear.
2. When transporting machine on tractor three point Linkage the bale loading arm should be in the fully raised position and the safety prop fitted .

MACHINE IDENTIFICATION

The Serial Number plate is located on 3pt. Linkage frame.

Always refer to this number when ordering parts.

The Spare parts catalogue number and description should be used. The reference numbers are used to help identifying the spare part.

For your records write Serial number here.

Serial Number. _____

PREPARATION OF A NEW MACHINE

1. Check height of film mast to ensure that centre line of film spool is level with the centre line of the bale on the turntable. This will alter with different bale diameters. If this alignment is not correct more film than necessary will be used. See Fig 1.
2. When connected to John Deere* tractor the valve must be converted to closed centre.

HYDRAULIC CONNECTIONS

Connect the feed and return hoses from the Autowrap valve to the tractor's double-acting facility.

NOTE: The return hose is fitted with a non-return valve to protect the Autowrap from damage in the event of incorrect connection to tractor hydraulics.

NOTE* To ensure maximum efficiency and length of life of hydraulic components this machine requires a clean supply of hydraulic oil. IT IS RECOMMENDED THAT THE TRACTOR HYDRAULIC FILTER ELEMENT BE REPLACED AND THEREAFTER MAINTAINED IN ACCORDANCE WITH THE MANUFACTURERS RECOMMENDATIONS.

© Copyright 1995 RDS Technology Ltd

Our policy is one of continuous improvement. The information in this document is subject to change without notice.

Conventions

This document uses the following conventions:

This typeface relates to an operator action.

lfd and *this typeface* relates to an instrument response.

NOTE

Highlights additional information.



Highlights information which if disregarded, may increase the risk of data loss or damage to equipment.

WARNING!

Highlights information which if disregarded, may increase the risk of personal injury.

ELECTROMAGNETIC COMPATIBILITY (EMC)



This product complies with
Council Directive 89/336/EEC
when installed and used in accordance
with the relevant instructions.

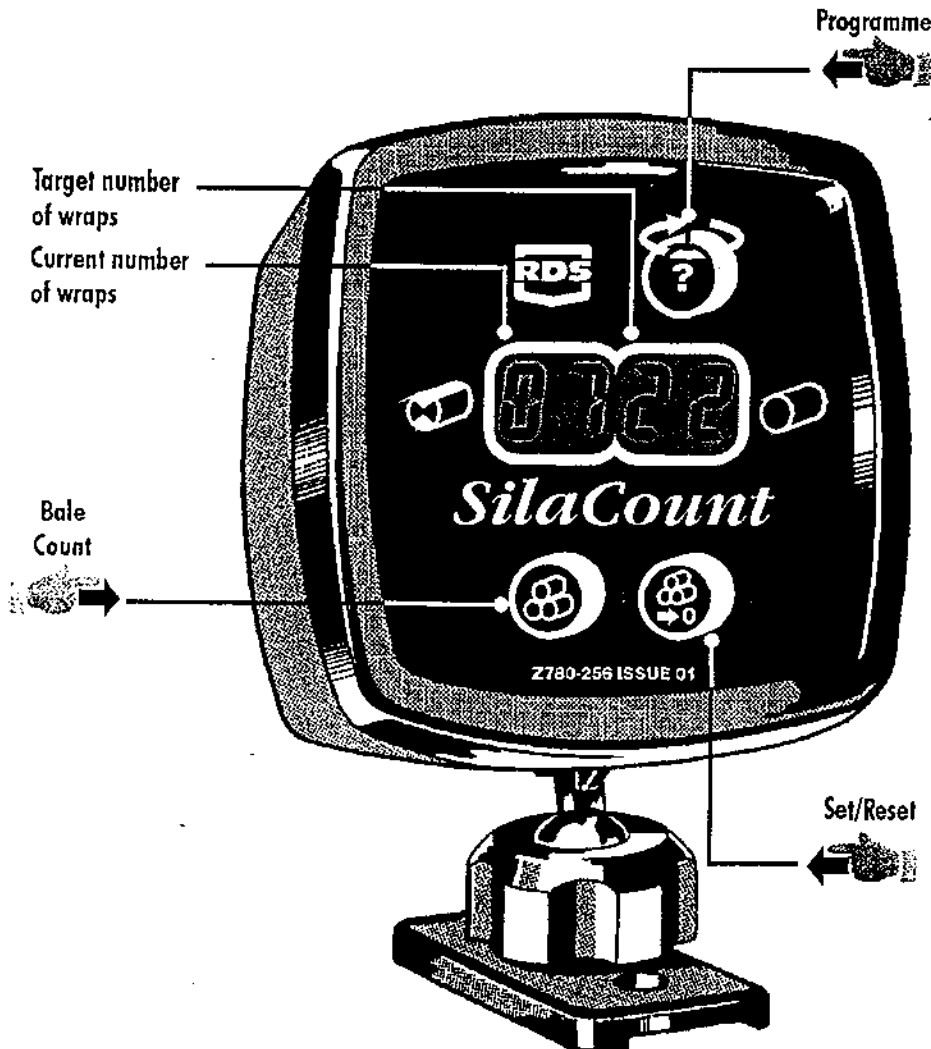
The *RDS Silacount* is used on a bale wrapping machine to count the number of wraps of film applied to the bale. The total number of bales wrapped is accumulated and stored in the instrument memory.

It has an illuminated 4 digit LCD display, 3 switches to control all functions and an internal alarm. An external alarm is optional.

The instrument is normally powered on via the vehicle ignition circuit.

What can it do ?

- o Continuously displays the current number of wraps around the bale alongside the desired number of wraps preset by the operator.
- o Sounds an alarm at a preset number of wraps before the target number is reached.
- o Automatically senses when the bale wrap sequence ends and records it to each of two memory registers:
 - (i) Grand Total
 - (ii) Part Total



Section 2 - The control switches



There are 3 switches on the front panel used individually or in combination, to programme, set/reset or select a function.

Programme




Press and hold in combination to:

- (i) Set Target Wrap number.
- (ii) Set alarm threshold.
- (iii) Totally reset instrument.

Set/Reset



Press and hold:

- o in combination with  to cycle digits from 0-9 when entering preset values for:
 - (i) Target Wrap number.
 - (ii) Alarm threshold.
- o for 5 seconds to reset part total or Current Wrap number.

Bale count



Press and hold to display bale totals.

3.1 Current/Target Wraps display

The lefthand section shows the current number of wraps and the righthand section shows the target number.

When the current number = Target number, the alarm will sound for 2 seconds and the display will flash. (If set, the early warning alarm sounds beforehand). Automatic reset of current number to zero normally occurs 3 seconds after the Target number is reached. If additional wraps are added after the Target number is reached, the current number will continue to advance.



Manually reset Current Wraps to zero



Hold.

Programme Target Wraps



1 Hold continuously.

Third digit flashes.



2 Hold to cycle to the desired digit, then release, otherwise press once.

Fourth digit flashes.



3 Repeat Step 2.

4 Release all.



Programme Early Warning Alarm

An early warning alarm can be programmed to sound from 1 to 9 wraps before the target number is reached. For example, if the bale requires 22 wraps and you want an alarm at 20 wraps, then set the number to 2.

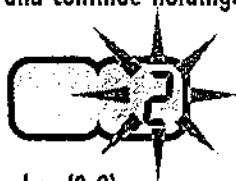
To effectively disable the alarm, set the number to 0.

1 Switch power off.



2 Hold, switch power on and continue holding.

Fourth digit flashes.



3 Cycle to the desired number (0-9).

4 Release all.

3.2 Part and grand total

When bale wrap is complete, both part and grand totals automatically advance by 1. The part total can be reset at any time. The grand total cannot be reset.

Display totals



Hold.

Part total displays for 8 seconds.



4 bars display momentarily



Grand total displays for a further 8 seconds, then defaults to the normal display.



Reset part total



Hold with part total displayed.

3.3 Total reset

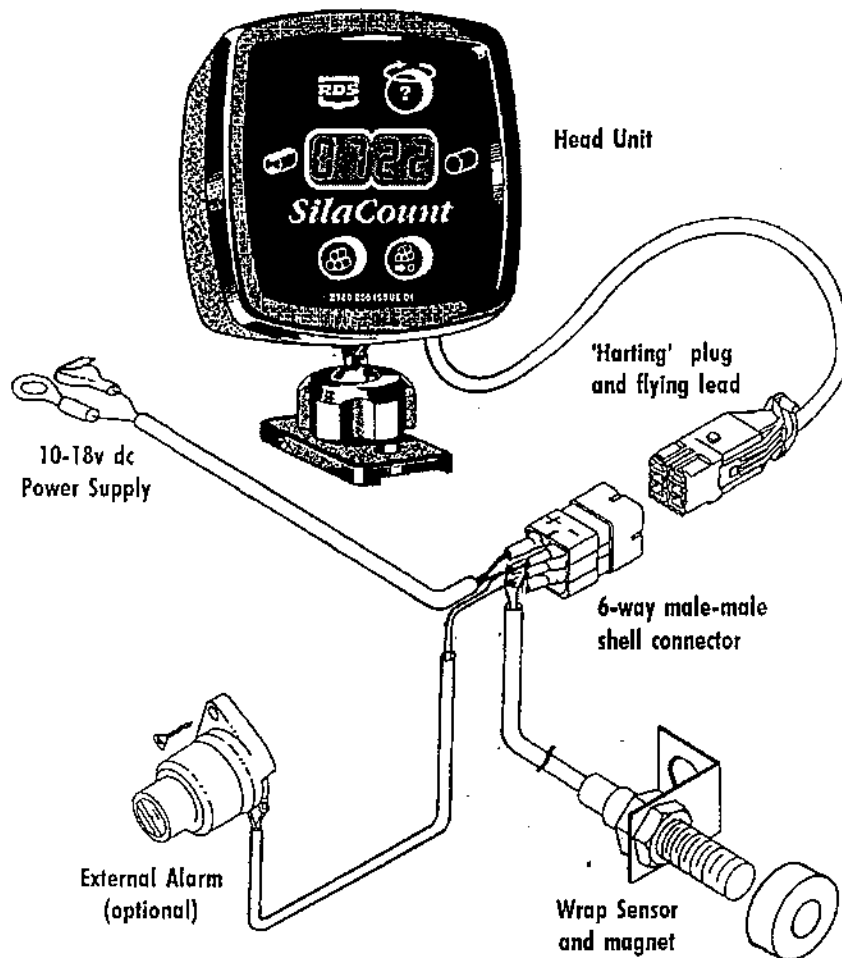
If for some reason the data in the instrument is corrupted or the display shows 'Pr00' then the instrument must be totally reset.

- 1 Switch power off.
- 2 Press and hold all control switches.
- 3 Switch power on.
- 4 Release all switches.

All instrument settings should be returned to the factory-set values. If the display shows 'Pr00' again, the instrument may be faulty and must be returned to the manufacturer for inspection and repair.

System components

- o Instrument head unit with internal alarm, supplied housed in an instrument pod for versatile mounting.
- o Magnet fixed on the turntable or wrapper arm, operating a stationary wrap sensor.
- o External Audible alarm (Optional).



Head unit

Location

The instrument can be situated in the tractor cab or on the bale wrapper whichever is more convenient for the operator.

Cab-mount in front of the driver, on the dashboard or suspended from the cab roof or corner pillar.

If the bale wrapper is operated from the wrapper, the instrument can be fitted on it. The head unit is waterproof.

WARNING!

Do not position the instrument where it may obstruct the operators view or use of existing controls.

Fixing the instrument pod

The instrument pod can be positioned so that the pod foot is below, on top, or on either side of the head unit.

To change the pod foot orientation,

- 1 Remove the large 'pozi-drive' screw from the rear of the pod.
- 2 Withdraw the inner head unit and turn through 90° or 180°. It may be necessary to re-route the cable underneath the fixing strap.
- 3 Re-assemble the pod and head unit, taking care to locate the cable grommet in the cable slot.

To fix the pod foot,

- 1 Remove the instrument pod completely from the pod foot, by undoing the large nut at the base of the instrument.
- 2 Fix the foot using two No. 8 x 5/8" countersunk self-tapping screws. These require two 3.5mm (9/64") holes.



Do not overtighten the fixing screws.



- 3 Re-mount the instrument pod to the foot.

Do not overtighten the fixing nut.

'Harting' Connector

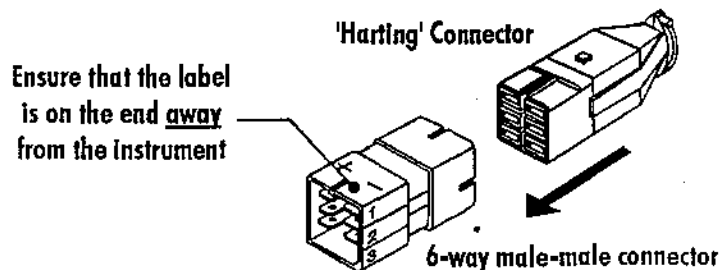
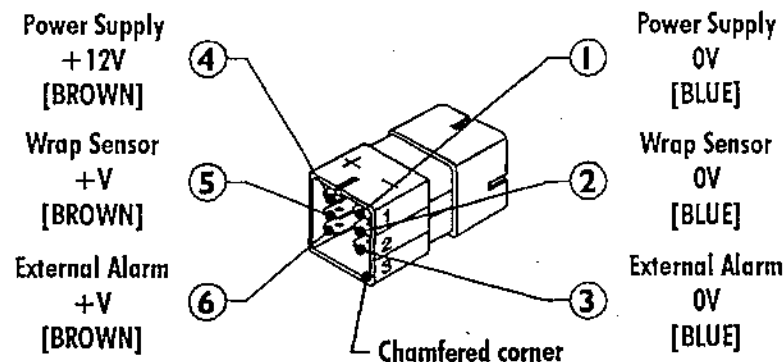
The head unit is supplied with a flying lead terminating in a 6-way connector plug.

Cables are connected to a mating 6-way male-male connector shell, to create a quick release connection between the instrument and the vehicle. This allows the head unit to be easily transferred to another vehicle.

A label on the connector identifies each terminal. Orientation is identified by a **chamfered corner** and a groove.

NOTE

It will be easier to identify the connections by fitting the connector shell onto the flying lead before installation. The labelled end is fitted **furthest away** from the the flying lead.



Power supply

Cab mounted

Use the two-core cable supplied with female push-on connectors at one end, a ring and a piggyback at the other end.

- 1 Connect the blue wire to terminal 1 and the brown wire to terminal 4 of the shell connector.
- 2 Connect the piggyback connector to a +12v terminal at a switched, fused point on the vehicle electrical system. This may be at the fuse box or on the back of the ignition switch.



5 amp maximum fuse rating.

- 3 Fix the ring terminal under any convenient bolt head.

NOTE

Ensure a good earth connection. Check the bolt is fixed to an integral part of the vehicle chassis, free of paint, rust, grease etc.

Bale wrapper mounted

Take the power supply from the trailer lighting socket if fitted.

Utilise the two-core cable supplied.

- 1 Cut off the ring and piggyback terminals and strip the wires back 5mm.
- 2 Connect the brown wire (+ve) to terminal 5 (58R) or 7(58L) and the blue wire (-ve) to terminal 3(31) of the lighting plug.
This will provide power to the instrument when the tractor side lights are switched on.

External Alarm (optional)

This can be sited anywhere convenient to the operator. It is secured by a single self-tapping screw. If it is fitted on the wrapper it must be protected from direct rain or hosing.

Connect the blue wire to terminal 3 and the brown wire to terminal 6 of the shell connector.

OPERATING INSTRUCTIONS

1. Fit roll of film and thread through the Dispenser roller assembly by following the instruction label on the film mast.
 2. Adjust tractor engine speed to give turntable speed of 16 - 30 r.p.m. **NOTE:-** Speeds in excess of 30 r.p.m. will void warranty.
 3. Lower bale into position with a Grab. Attach film wrap by tying end to a string or net on the bale.
 4. Start wrapping. Film tension is automatically set so that width of film applied to the bale stays at a approx width of 400mm for 500m film.
 5. Continue wrapping until all of bale is covered twice, then allow a further 2 full revolutions of turntable before stopping with end of bale close to operator. Grip film with left hand and while maintaining tension across bale, cut film at R.H. end. Pull loose end of film tight, and tuck under the final wrap to secure loose end and ensure weather proof finish.
 6. Rotate the turntable and Tip bale from machine.
 7. Return turntable to fore and aft position ready for next bale.
- N.B. The use of a Tanco Bale Grab mounted on a frontend loader is recommended for loading bales onto the machine as this unit enables the bales to be positioned accurately and quickly.

FILM OVERLAP SYSTEM.

The Autowrap is fitted as standard with the 2 x 2 x 50% film overlap system. This is achieved by means of a chain drive which ensures that the correct number of film layers are applied to the bale after a specific number of revolutions of the turntable. The number of revolutions required to wrap a bale depends on width of film being used and bale size - See **Table 1** below. The chain to be positioned on inner sprockets for 750mm wide film and on outer sprockets for 500mm wide film. See fig. A below.

For silage bales we recommend the application of a minimum of four layers of film.

Table 1

Bale Size	Width of Film Roll	Bale Indicator Setting (Revs)
120cm x 120cm	500mm	25
120cm x 120cm	750mm	17
120CM x 137cm	500mm	28
120CM x 137cm	750mm	19
120CM x 150cm	500mm	31
120CM x 150cm	750mm	21

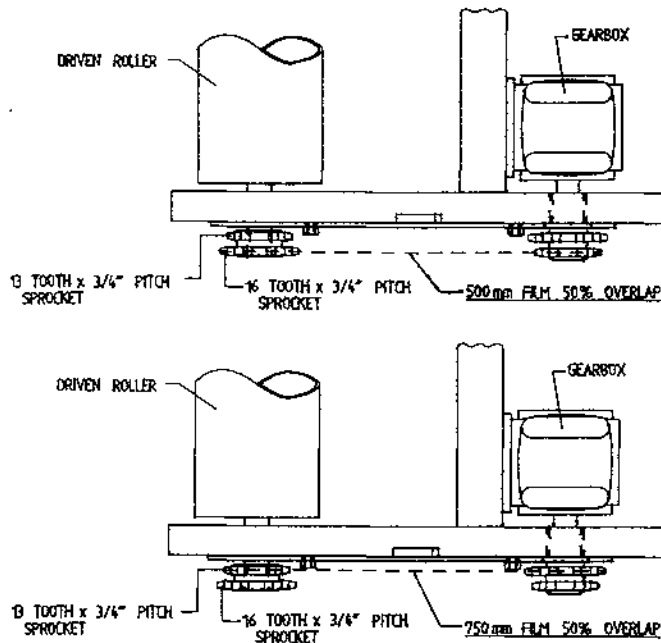


FIG. A

IMPORTANT

The above recommendations are only offered as a guide to correct wrapping of silage bales and the manufacturers accept no responsibility for variations that may arise and the consequence of same. They are based upon turntable speeds of up to 25 r.p.m., and a approx film width of 400mm applied to end of Bale when using 500mm wide film roll or a approx film width of 600mm applied to end bale when using 750mm wide film roll.

It is the responsibility of the operator to ensure the correct number of wraps are applied, as variances can occur with fluctuations in speed of rotation, film quality and tensioning, shape and density of bale etc.

SERVICE AND MAINTENANCE

1. All nuts and bolts should be tightened after some hours in use and thereafter regularly.
2. Wheel pressure should be normally kept at 42 psi depending on bale weight and field conditions.
3. Inspect moving parts for wear on daily basis.
4. Lubrication.

Drive chain & sprocket	-	grease every 24 hours.
End rollers	-	grease every 24 hours.
Main rollers	-	grease every 24 hours.
Hinge pins on Lift arm	-	grease every 24 hours.
Hinge pins on main tip frame	-	grease every 24 hours.
Hydraulic rams	-	grease every 24 hours.
Wheel bearings	-	grease every 24 hours.
Film reel assy.	-	grease every 24 hours.
Dispenser gearboxes	-	grease sparingly each month.
Main spindle	-	grease every 4000-5000 bales.
Gearbox oil level	-	Check every 4000-5000 bales.
5. Adjustments

Turntable Drive chain	:	Adjust after first days work then check/adjust every 50 hours. See Fig. 8.
Gearbox Drive chain	:	Adjust after first days work then check/adjust every 50 hours. See Fig 2.
Roller Drive chain	:	Adjust after first days work then check/adjust every 50 hours See Fig 3.
Main Bale Belt	:	See belt tracking instuction.
6. Film Dispenser

Fit with marked gearbox at top.
Apply one shot of EPO type Grease
Wash rollers often to avoid build up of Tack from film using petrol.
Follow Film threading diagram. See Fig 1.
7. Film Adjustment

Centre of film roll must be in line with centre of bale and film mast should be vertical.

8. Shear Pins

There are two shear pins fitted to sprocket assembly on drive roller see fig 5. If the pins shear, remove the broken pins re-align holes and fit two replacement spiral pins, 6mm dia x 20mm long, Din 7343. There are two spare shear pins attached to inside of chain guard.

NOTE: If shear pins are replaced with other than specified above all warranty is null and void.

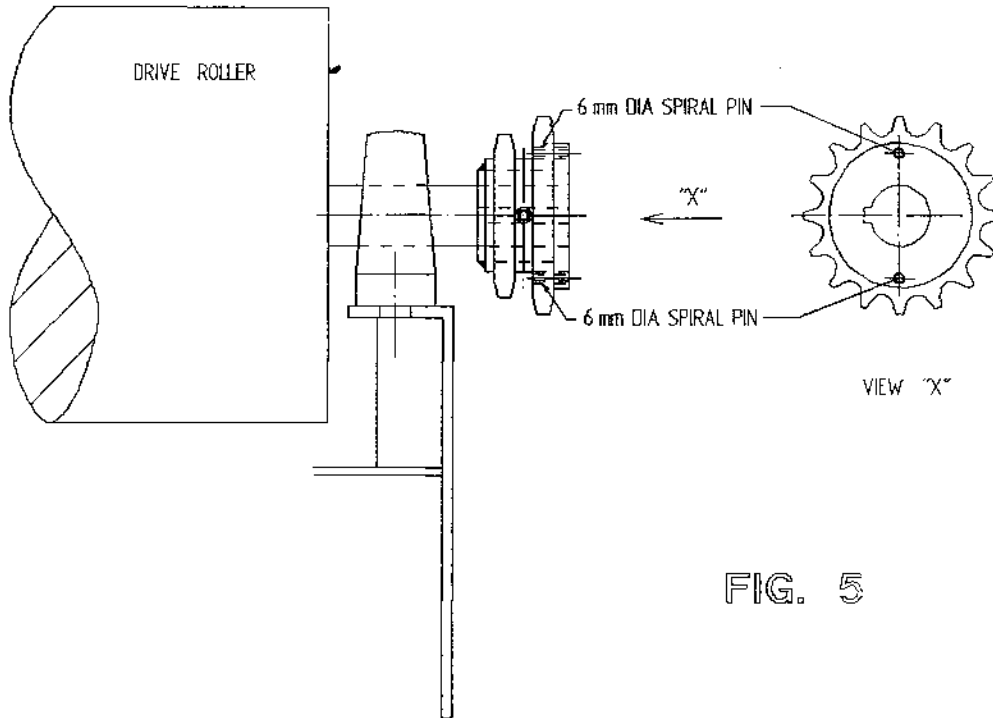
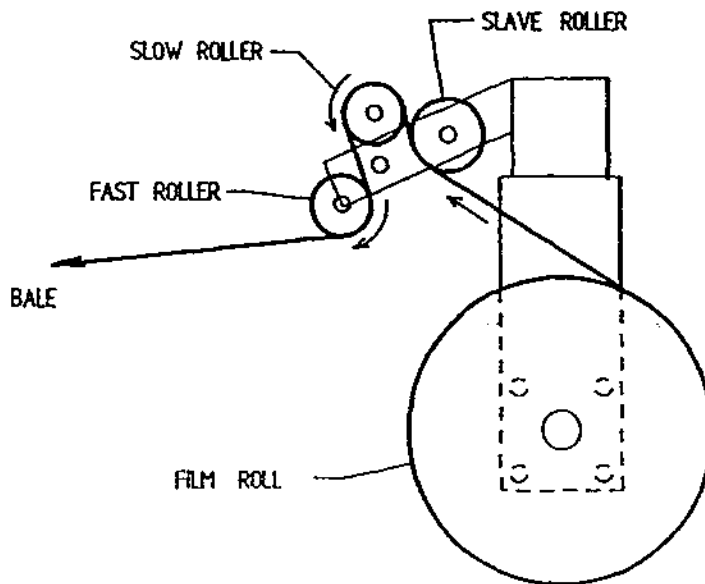


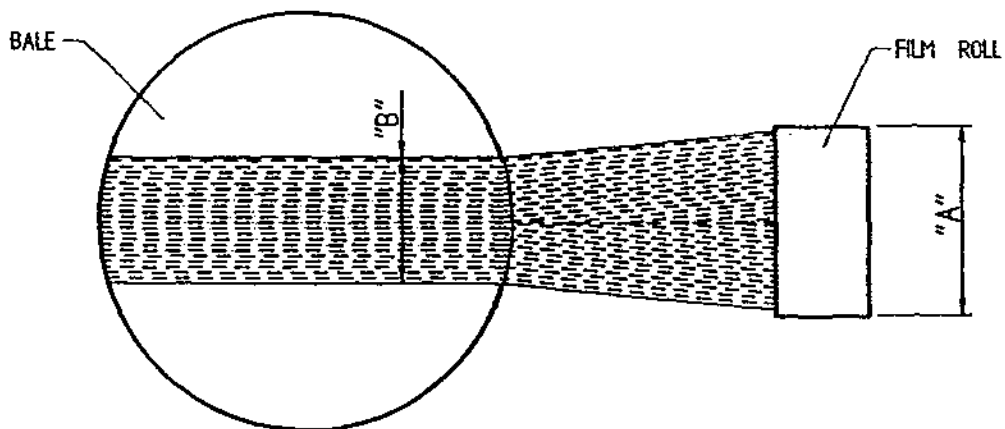
FIG. 5

TANCO AUTOWRAP FILM THREADING DIAGRAM



FILM ADJUSTMENT

CENTRE OF FILM ROLL MUST BE IN LINE WITH CENTRE OF BALE AND FILM MAST SHOULD BE VERTICAL

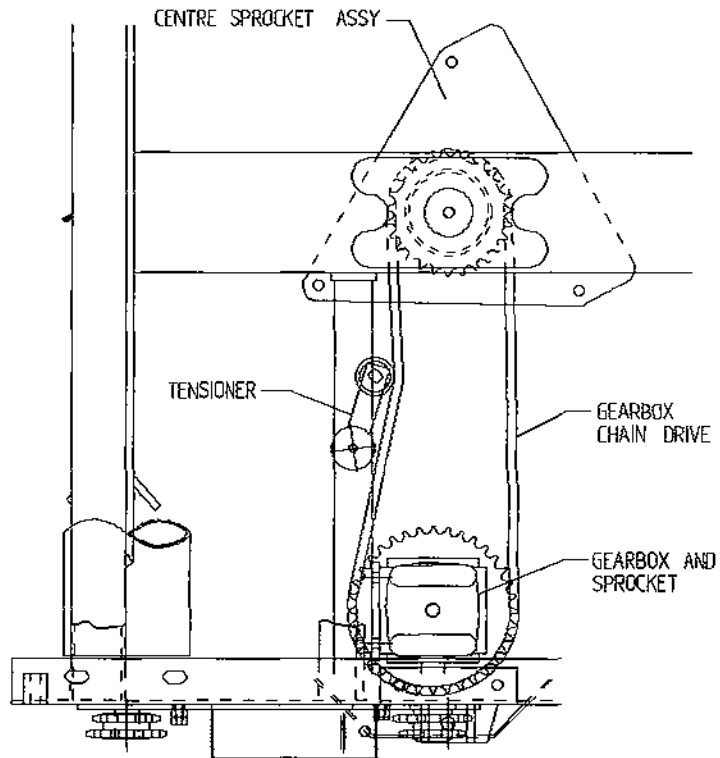


FILM ROLL WIDTH "A"	FILM WIDTH ON END OF BALE "B"
500 mm	400 mm
750 mm	600 mm

Fig. 1

FILE NAME W068-LA21

TANCO AUTOWRAP CONSTANT INDEXING
GEARBOX CHAIN DRIVE TENSIONING SYSTEM (1996)



CHAIN TENSIONING PROCEDURE

1. LOOSEN M10 BOLT SECURING CHAIN TENSIONER.
2. TENSION CHAIN BY ADJUSTING TENSIONER USING SPANNER IN DIRECTION OF ARROW "X" UNTIL SETTING OF 15"-20" IS REACHED.
3. RE-TIGHTEN M10 BOLT TO SECURE TENSIONER IN POSITION.

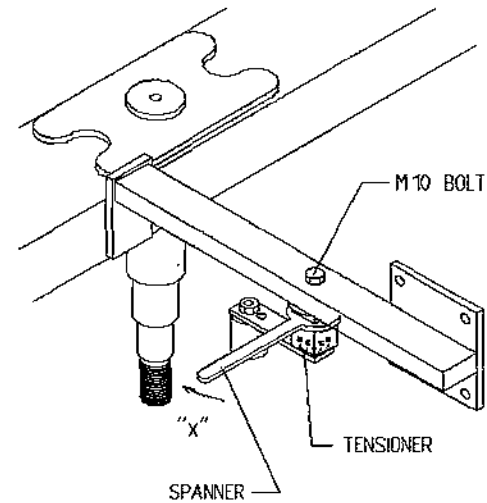
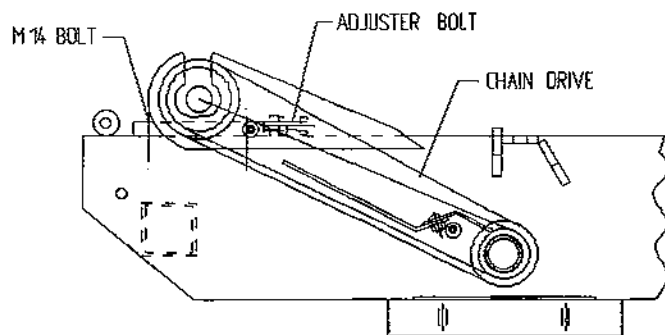


Fig. 2



ROLLER CHAIN DRIVE TENSIONING SYSTEM

CHAIN TENSIONING PROCEDURE

1. LOOSEN M14 BOLTS SECURING BEARING.
2. TENSION CHAIN BY LOOSENING LOCKING NUT AND TURNING ADJUSTER BOLT CLOCKWISE TO TAKE UP SLACK IN CHAIN. SECURE IN POSITION WITH LOCKING NUT. ENSURE EQUAL ADJUSTMENTS ARE MADE ON BOTH SIDES.
3. RE-TIGHTEN M14 BOLTS SECURING BEARINGS TO 170Nm. (125FT. Lbs.).

Fig. 3

TANCO AUTOWRAP 1996 MODEL TURNTABLE CHAIN DRIVE TENSIONING SYSTEM

TENSIONING PROCEDURE

1. TIP UP MACHINE AND SUPPORT WITH A PROP.
2. REMOVE CHAIN GUARD.
3. SLACKEN M12 CLAMPING BOLTS SLIGHTLY.
4. SLACKEN LOCKNUT A.
5. ADJUST NUT B UNTIL THERE IS 8mm-10mm DEFLECTION ON CHAIN.

NOTE WARNING:
DO NOT OVER TENSION CHAIN AS MOTOR WILL BE DAMAGED

6. TIGHTEN LOCKNUT A.
7. TIGHTEN M12 CLAMPING BOLTS.
8. REFIT CHAIN GUARD.

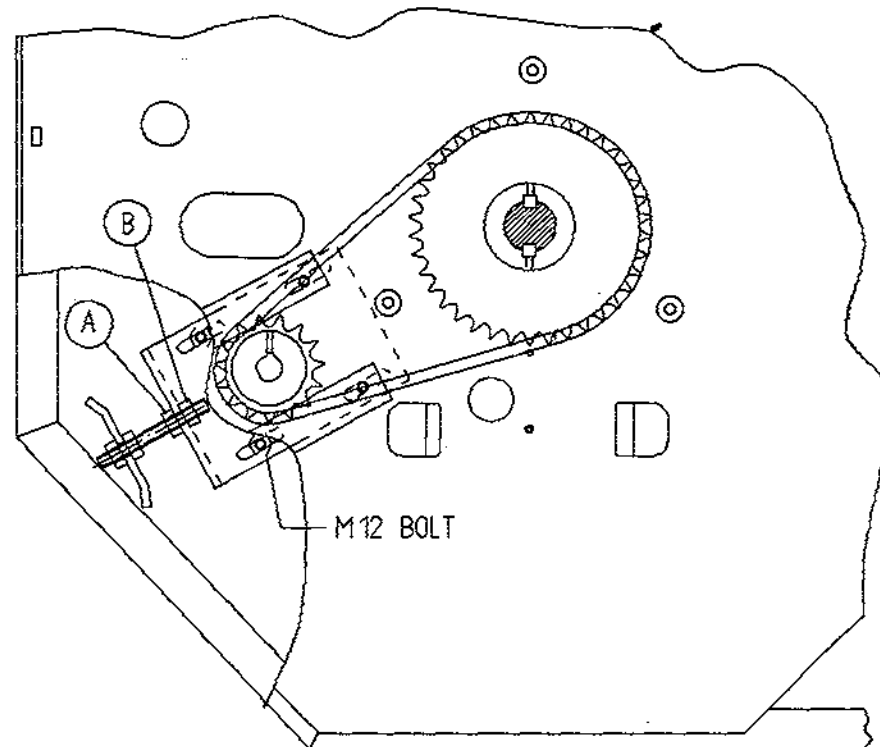


Fig. 8

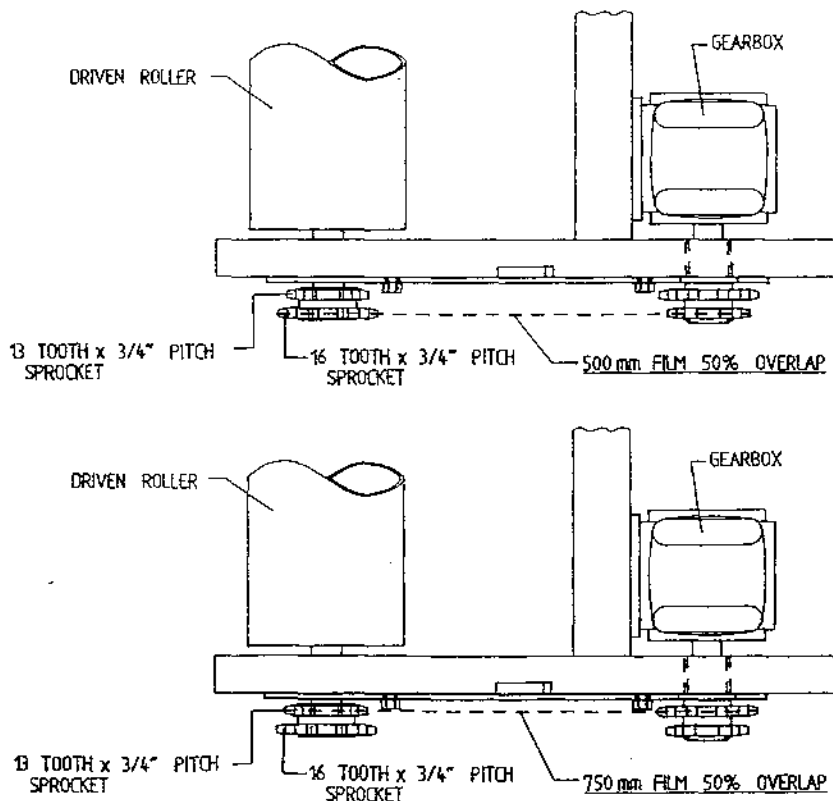
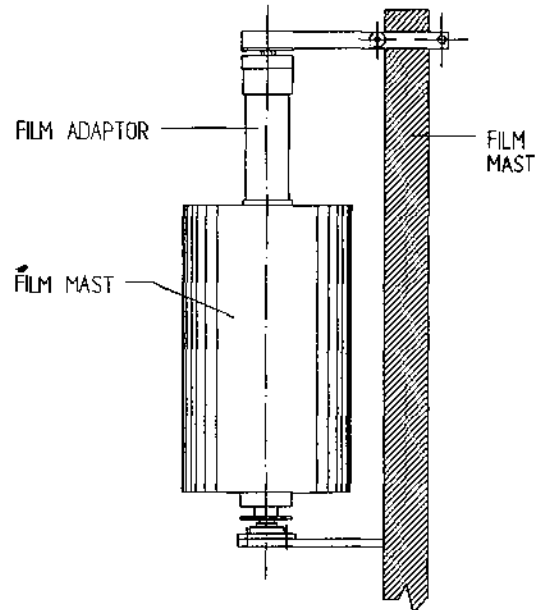
FILE NAME WD64-LA2

FILM ADAPTOR

OPERATING INSTRUCTION

500mm wide film rolls are used as standard on 250, 350, & 450 Autowrap Models while 750mm wide film rolls are used as standard on 550 model. If however, it is found necessary to use 500mm wide rolls along with 750mm film dispenser the following instructions must be adhered to: (NOTE: Failure to do so will result in inadequate wrapping and bale spoilage).

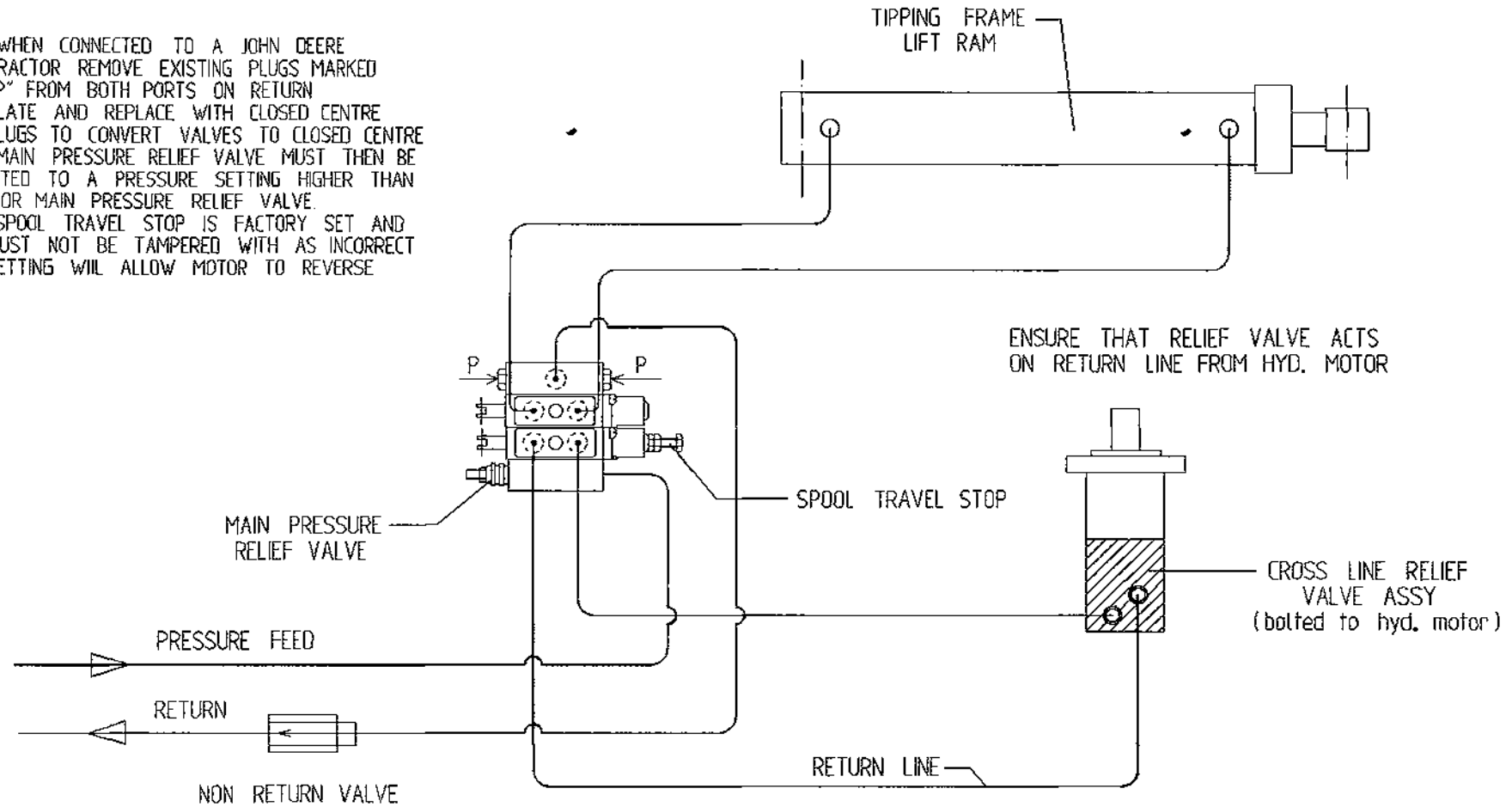
1. Fit film adaptor to top end of 500mm wide film roll as shown opposite.
2. Remove drive chain from inner set of sprockets and fit to outer set of sprockets as shown in Fig. below.
3. Re-tension chain.
4. Adjust height of film mast so that centre of film roll is in line with centre of bale on the turntable.
5. Adjust bale wrap indicator setting from 17 to 25 revolutions for 120cm x 120cm blaes. (See Table 1 for guide to bale wrap indicator settings).



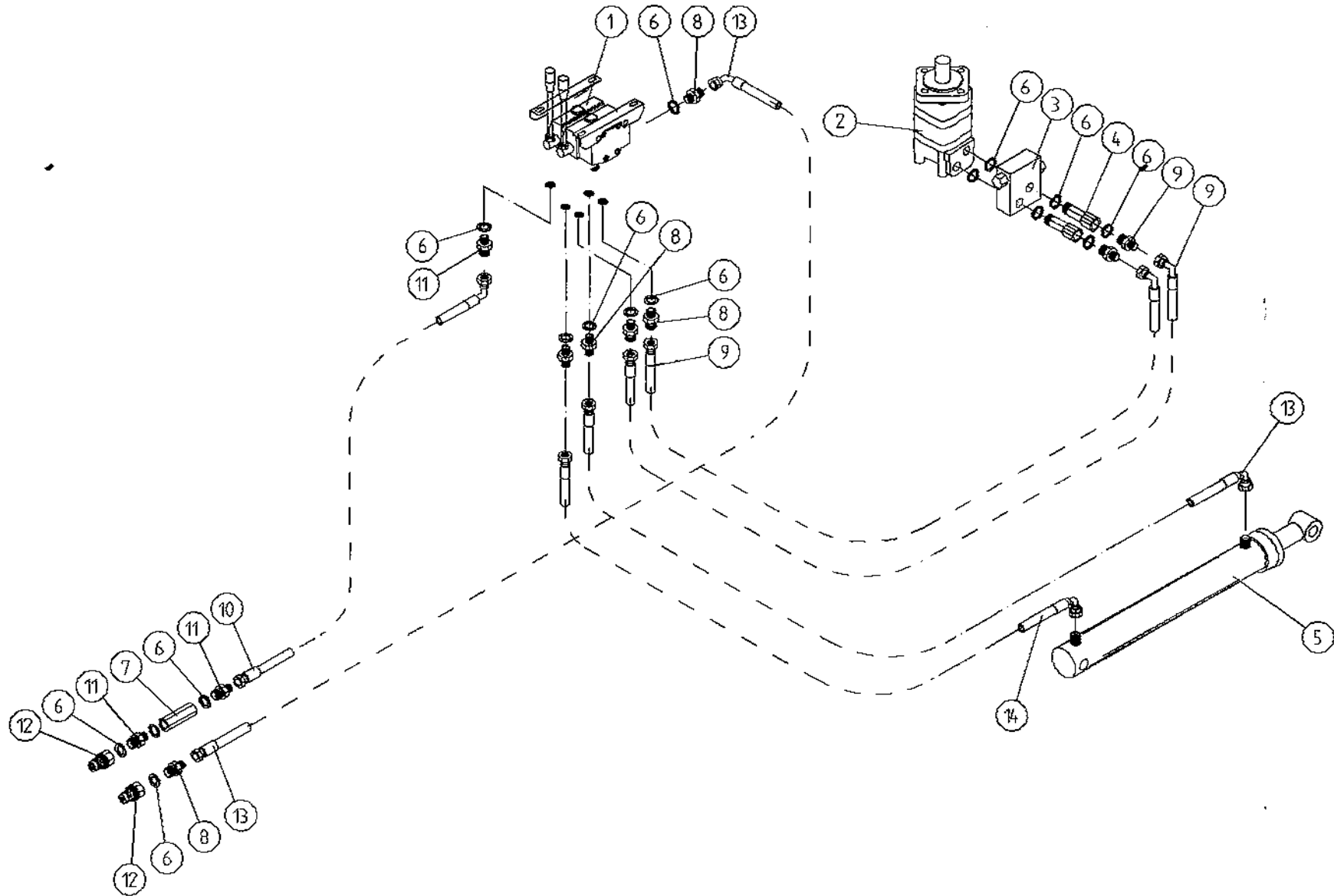
TANCO AUTOWRAP 250 S MODEL 1996 HYDRAULIC CIRCUIT DIAGRAM

NOTE

- (A) WHEN CONNECTED TO A JOHN DEERE TRACTOR REMOVE EXISTING PLUGS MARKED "P" FROM BOTH PORTS ON RETURN PLATE AND REPLACE WITH CLOSED CENTRE PLUGS TO CONVERT VALVES TO CLOSED CENTRE
- PLUGS TO CONVERT VALVES TO CLOSED CENTRE THE MAIN PRESSURE RELIEF VALVE MUST THEN BE ADJUSTED TO A PRESSURE SETTING HIGHER THAN TRACTOR MAIN PRESSURE RELIEF VALVE.
- (B) SPOOL TRAVEL STOP IS FACTORY SET AND MUST NOT BE TAMPERED WITH AS INCORRECT SETTING WILL ALLOW MOTOR TO REVERSE



TANCO AUTOWRAP 250-S MODEL (3 pt LINKAGE) 1996
HYDRAULIC COMPONENTS



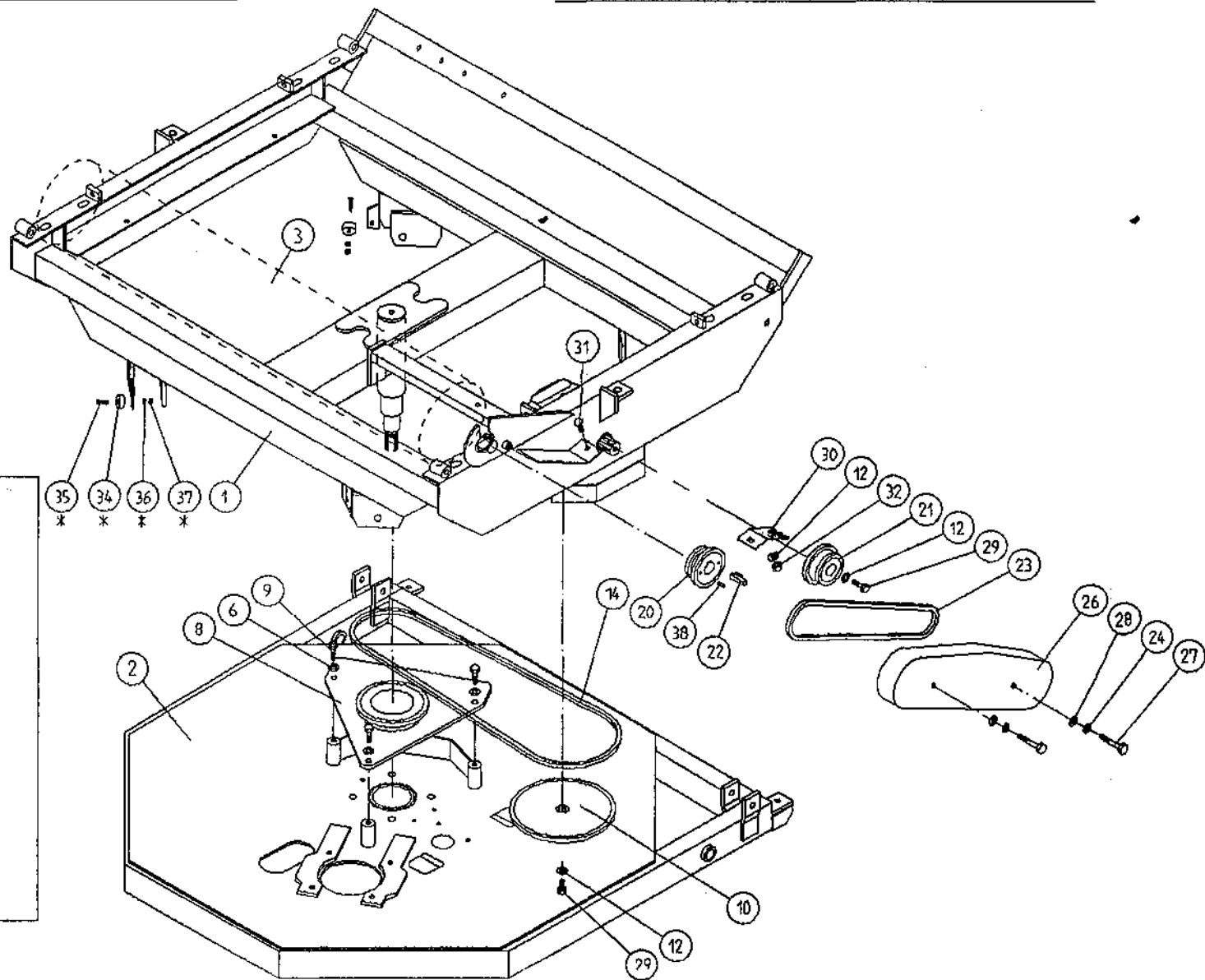
WD64-PL24
TANCO AUTOWRAP 250 S MODEL (3PT LINKAGE) 1996
PARTS LIST
HYDRAULIC COMPONENTS (DIN)

ITEM NO.	DESCRIPTION	QTY.	PART-NO
1	2 BANK SPOOL VALVE C/W LEVERS	1	Z01-03-018D2
2	HYDRAULIC MOTOR (C.L.)	1	Z01-02-RF200
3	CROSS LINE RELIEF VALVE	1	Z01-03-004
4	1/2" BSP BOTTOM BANJO BOLT (SPECIAL)	2	Z01-03-002B
5	HYD. RAM (FOR TIPPING FRAME)	1	Z01-01-AR687
6	1/2" DOWTY WASHER	16	Z01-04-03
7	1/2" NON RETURN VALVE	1	Z01-03-017
8	1/2" x 3/8" ADAPTOR	8	Z01-06-06-08
9	144" ST/90 3/8" D/W HOSE	2	Z38-R2-144-S9
10	84" ST/90 1/2" S/W HOSE	1	Z12-R1-84-S9
11	1/2" x 1/2" ADAPTOR	3	Z01-06-08-08
12	1/2" MALE END Q/R COUPLING	2	Z01-15-081
13	84" ST/90 3/8" D/W HOSE	2	Z38-R2-84-S9
14	72" ST/90 3/8" D/W HOSE	1	Z38-R2-72-S9

TANCO AUTOWRAP 1996 MODEL

CONSTANT INDEXING DRIVE ASSY

NOTE:
ITEMS MARKED WITH * DENOTES ITEMS
REQUIRED FOR AUTOMATIC MODELS ONLY.



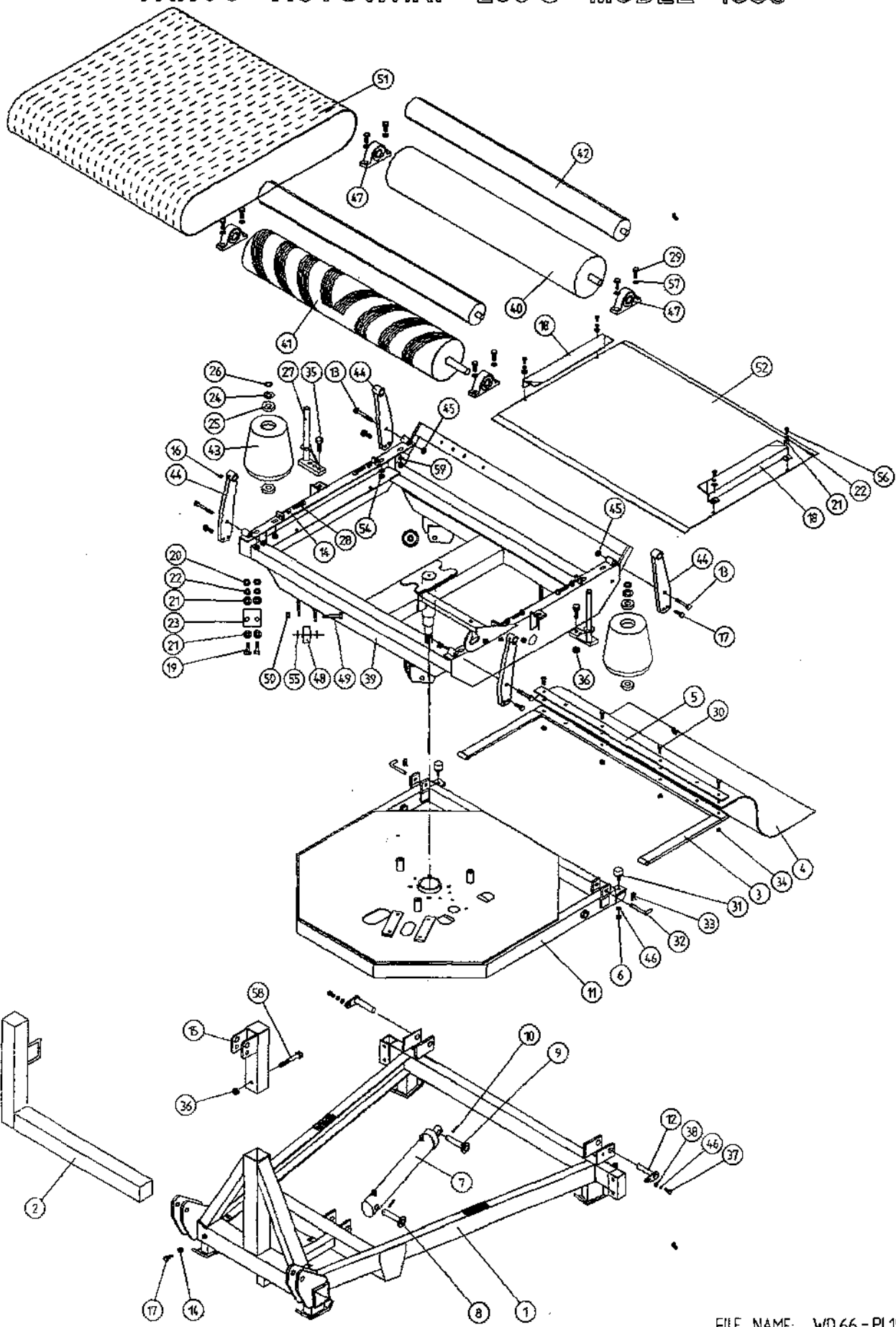
TANCO AUTOWRAP
CONSTANT INDEXING DRIVE ASSEMBLY 1996

PARTS LIST

ITEM NO.	DESCRIPTION	QTY.	PART-NO
1	TURNTABLE ASSY.	1	WD66-TA
2	TIPPING FRAME ASSY.	1	WD64-TF
3	DRIVE ROLLER ASSY.	1	WD66-BRD
4	GEAR BOX	1	Z01-25-300
5	M12 HEX HD SET x 30mm LONG	4	Z26-082S
6	12mm DIA SPRING WASHER	7	Z12-02-12
7	CHAIN TENSIONER	1	WD60-CT
8	CENTRE SPROCKET ASSY 27 TOOTH	1	WD64-CSA
9	M12 HEX HD SET x 25mm LONG	3	Z26-081S
10	46 TOOTH SPROCKET	1	Z06-D64-46S
11	M10 HEX HD SET x 25mm LONG	1	Z26-0611S
12	10mm DIA SPRING WASHER	4	Z12-02-10
13	RETAINING COLLAR	1	WD623-071
14	CHAIN 3/4" PITCH X 87 PITCHES	1	Z09-AW-5
15	ROSTA TENSIONING UNIT ARM	1	Z06-454
17	M10 HEX HD BOLT x 65mm LONG	1	Z26-0671B
19	M10 LOCKNUT	1	Z23-10
20	SPROCKET DOUBLE SIMPLEX 13T/16T KEYED	1	Z06-D64-1316K
21	SPROCKET DOUBLE SIMPLEX 13T/16T SPLINED	1	Z06-D65-1316S
22	KEY 5/16" x 5/16" x 32mm LONG	1	WD623-K32
23	CHAIN 3/4" PITCH X 62 PITCHES	1	Z09-AW-3
24	1/2" DIA STAR WASHER	2	Z10-01-121
26	CHAIN GUARD	1	WD60-CGC
27	M10 HEX HD SET x 70mm LONG	2	Z26-068B
28	10mm DIA FLAT WASHER	2	Z10-02-10
29	M10 HEX HD SET x 30mm LONG	2	Z26-062S
30	CHAIN STRIPPER	1	WD66-053
31	M10 CUP SQ. SCREW x 30mm LONG	1	Z13-112
32	M10 HEX NUT	1	Z18-10
34*	MAGNET	2	D6043
35*	M6 CSK HD SET x 35mm LONG	2	Z13-132
36*	6mm DIA FLAT WASHER	2	Z11-02-06
37*	M6 LOCKNUT	2	Z23-06
38	SPIRAL PIN	2	Z03-23-062

* DENOTE ADDITIONAL ITEMS REQUIRED FOR AUTOMATIC MACHINES

TANCO AUTOWRAP 250 S MODEL 1996



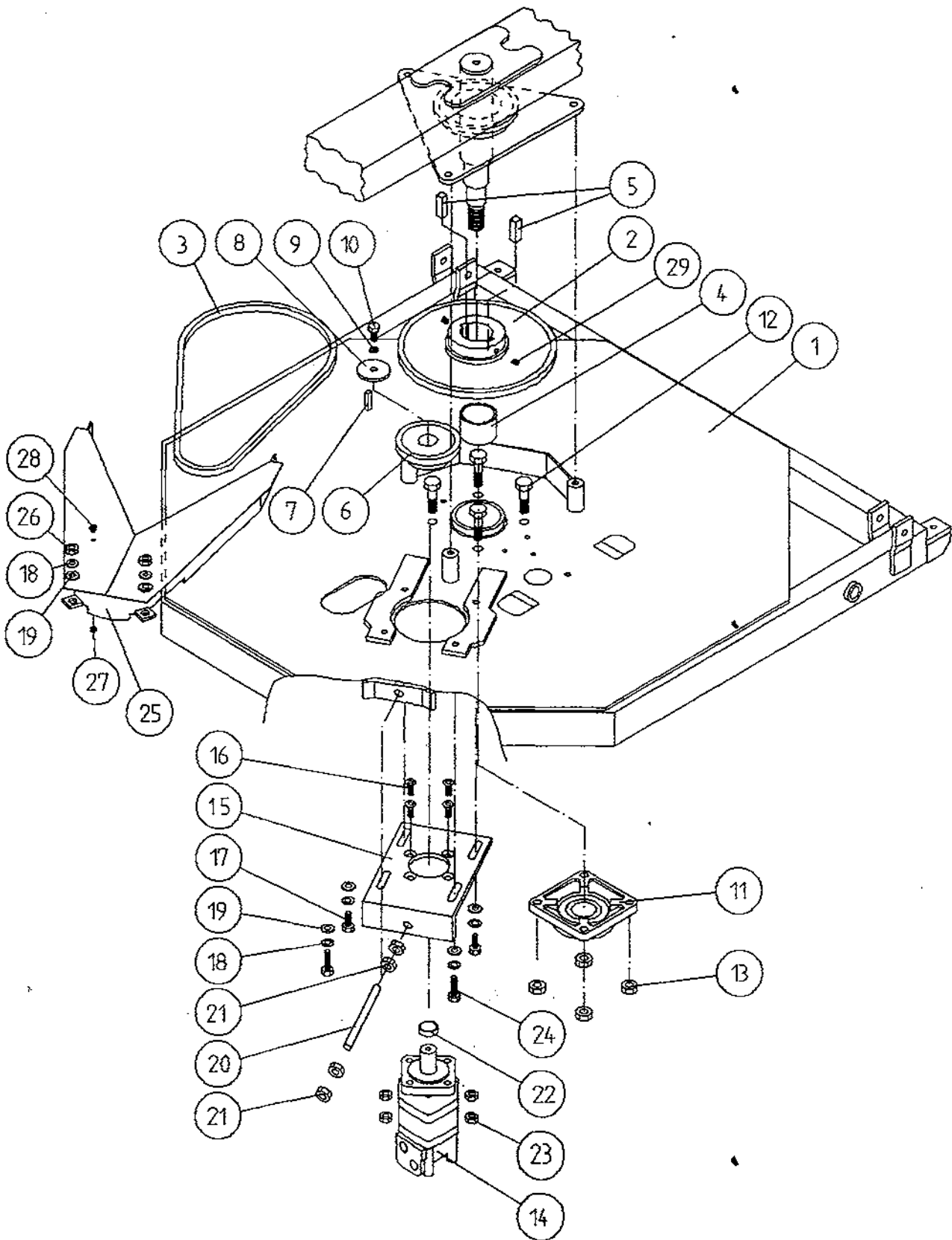
FILE NAME: WD 66 - PL19

WD66-PL19

TANCO AUTOWRAP 250S MODEL (3 PT. LINKAGE) 1996
PARTS LIST

ITEM	DESCRIPTION	QTY	PART-NO.
1.	3 PT. LINKAGE FRAME ASSEMBLY	1	WD63-MF
2.	DISPENSER BRACKET LOWER SUPPORT	1	ZWD63-DMLH
3.	RUBBER MAT MOUNTING FRAME ASSEMBLY	1	WD63-MMF
4.	RUBBER MAT	1	Z05-02AM
5.	CLAMPING PLATE	1	WD63-1300
6.	M10 HEX NUT	2	Z18-10
7.	HYD. RAM	1	Z01-01-AR687
8.	RAM. BOTTOM PIVOT PIN	1	Z03-02-330
9.	RAM TOP PIVOT PIN	1	Z03-03-50
10.	2" X 1/4" SPLIT PIN	2	Z03-21-29
11.	TIPPING FRAME ASSY	1	WD64-TF
12.	TIPPING FRAME PIVOT PIN C/W GREASE NIPPLE	2	Z03-01-905 Z39-60
13.	M12 HEX HD BOLT X 80MM LONG	4	Z26-0901B
14.	M12 HEX NUT	5	Z16-12
15.	TOP LINK BRACKET ASSEMBLY	1	WD63-TLB
16.	1/8" B.S.P. ST GREASE NIPPLE	4	Z39-60
17.	M12 HEX HD SET x 40mm LONG	5	Z26-084S
18.	BELT GUIDE ASSY	2	WD66-BG
19.	M8 HEX HD SETS X 20MM LONG	4	Z26-039S
20.	M8 HEX NUTS	14	Z18-08
21.	8MM DIA FLAT WASHERS (MUD FLAP)	8	Z11-02-081
22.	8MM DIA SPRING WASHERS	12	Z12-02-08
23.	SCRAPER	2	WD60-711
24.	THRUST WASHER	2	WD60-292
25.	BEARING (25MM I.D.)	4	Z06-AWRB-93
26.	CIRCLIP	2	Z28-525
27.	END ROLLER MOUNTING BRACKET	2	WD66-ERH
28.	M12 HEX HD SET X 60MM LONG	4	Z26-088S
29.	M14 HEX HD SET X 55MM LONG	8	Z26-105S
30.	M8 HEX HD BOLT x 50mm LONG	4	Z26-045B
31.	BUFFER 56mm DIA x 40mm LONG	2	Z40-20
32.	BISSEL PIN	2	Z03-22-AW100
33.	4MM "R" CLIP	2	Z36-02
34.	M8 LOCKNUTS	4	Z23-08
35.	M16 HEX HD SET X 50MM LONG	6	Z2G-124S
36.	M16 LOCKNUTS	3	Z23-16
37.	M10 HEX HD SET x 25mm LONG (TUFLOCK)	2	Z26-061S
38.	10 mm DIA MACHINED FLAT WASHER	2	Z11-02-10
39.	TURN TABLE ASSY	1	WD66-TA
40.	BELT ROLLER ASSY IDLER	1	WD66-BRI
41.	BELT ROLLER ASSY DRIVER	1	WD66-BRD
42.	SMALL ROLLER ASSY	2	WD66-SMR
43.	SIDE ROLLER	2	Z06-AWR
44.	ROLLER MTG BRACKET	4	WD66-RMB
45.	M12 LOCKNUTS	8	Z23-12
46.	10mm DIA SPRING WASHER	6	Z12-02-10
47.	1 1/4" PILLOW BLOCK BEARING C/W CAM LOCK COLLAR	4	Z06-485
48.	SUPPORT WHEELS (4" DIA)	4	Z06-466
49.	AXLE ASSY C/W GREASE NIPPLE	4	Z03-22-AW/AX Z39-60
50.	M20 LOCKNUTS	4	Z23-20
51.	1200MM WIDE X 2475MM LONG X 1/4" FLAT BELT	1	Z05-02AW96
52.	TURN TABLE COVER PLATE	1	WD66-043
54.	M14 HEX NUT	4	Z18-14
55.	SPACER	8	WD60-198
56.	M8 HEX HD SET X 30MM LONG	4	Z26-041S
57.	14MM DIA FLAT WASHER	8	Z11-02-14
58.	M16 HEX HD BOLT x 120mm LONG	1	Z26-134B
59.	14mm DIA SPRING WASHER	4	Z12-02-14

TANCO AUTOWRAP 1996 MODEL TURNTABLE CHAIN DRIVE ASSEMBLY



FILE NAME: WD66PL9

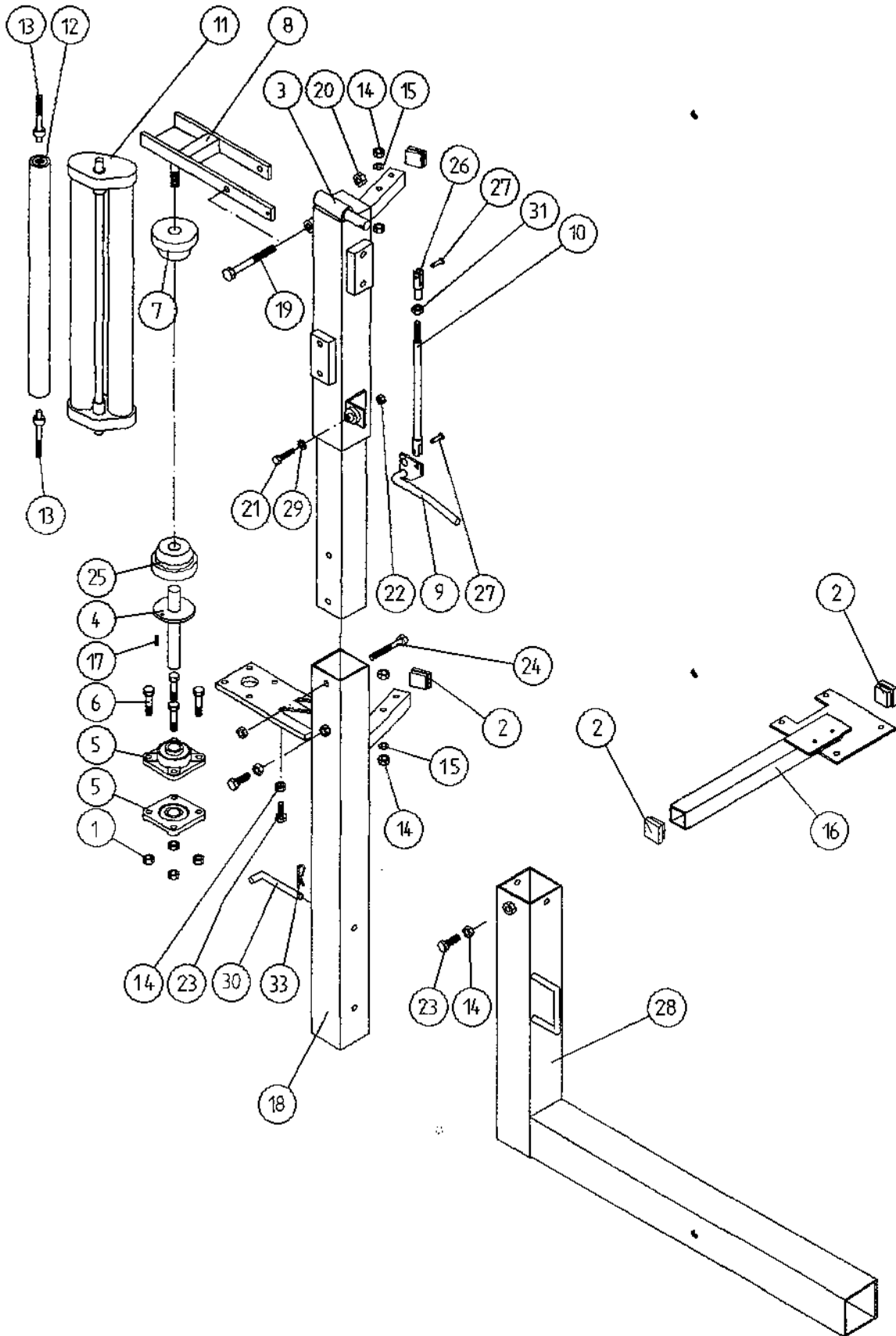
WD66-PL9

**TANCO AUTOWRAP 1996 MODEL
TURNABLE CHAIN DRIVE ASSEMBLY**

PARTS LIST

ITEM NO	DESCRIPTION	QTY	PART NO
1	TIPPING FRAME ASSY	1	WD64-TF
2	38 TOOTH x 1" PITCH SPROCKET	1	Z06-D64-38
3	CHAIN 1" PITCH x 54 PITCHES	1	Z09-AW6
4	SPINDLE SPACER	1	WD64-040
5	KEY 5/8" SQ x 50mm LONG	2	WD64-052
6	15 TOOTH x 1" PITCH SPROCKET	1	Z06-I60-046
7	KEY 5/16" SQ x 45mm LONG	1	WD64-053
8	LOCKING COLLAR	1	WD623-071
9	10mm DIA SPRING WASHER	1	Z12-02-10
10	3/8" UNC HEX HD SET x 1" LONG	1	Z27-023S
11	2" DIA FLANGE BEARING C/W CAM LOCK COLLAR	1	Z06-49EC
12	5/8" UNF HEX HD SET x 2" LONG	4	Z31B-064
13	5/8" UNF LOCKNUT	4	Z20-10
14	HYDRAULIC MOTOR	1	Z01-02-RF200
15	HYDRAULIC MOTOR MOUNTING PLATE	1	WD64-001
16	M12 x 50mm ALLEN HD C/S SCREW	4	Z13-5-12X50
17	M12 HEX HD SET x 30mm LONG	4	Z26-082S
18	12mm DIA SPRING WASHER	6	Z12-02-12
19	12mm DIA FLAT WASHER	6	Z10-02-12
20	M16 THREADED BAR x 150mm LONG	1	WD64-038
21	M16 HEX NUTS	4	Z18-16
22	SPACER	1	WI60-093
23	M12 LOCKNUTS	4	Z23-12
24	M12 HEX HD SET x 50mm LONG	2	Z26-086S
25	DRIVE CHAIN GUARD	1	WD66-DCG
26	M12 HEX NUT	2	Z18-12
27	M6 HEX NUT	1	Z18-06
28	M6 90 DEGREE GREASE NIPPLE	1	Z39-65
29	M12 GRUB SCREW x 16mm LONG	2	Z28-012

TANCO AUTOWRAP 250S MODEL 1996
FILM DISPENSER SYSTEM



FILE NAME WD 64 - PL30

WD64-PL30

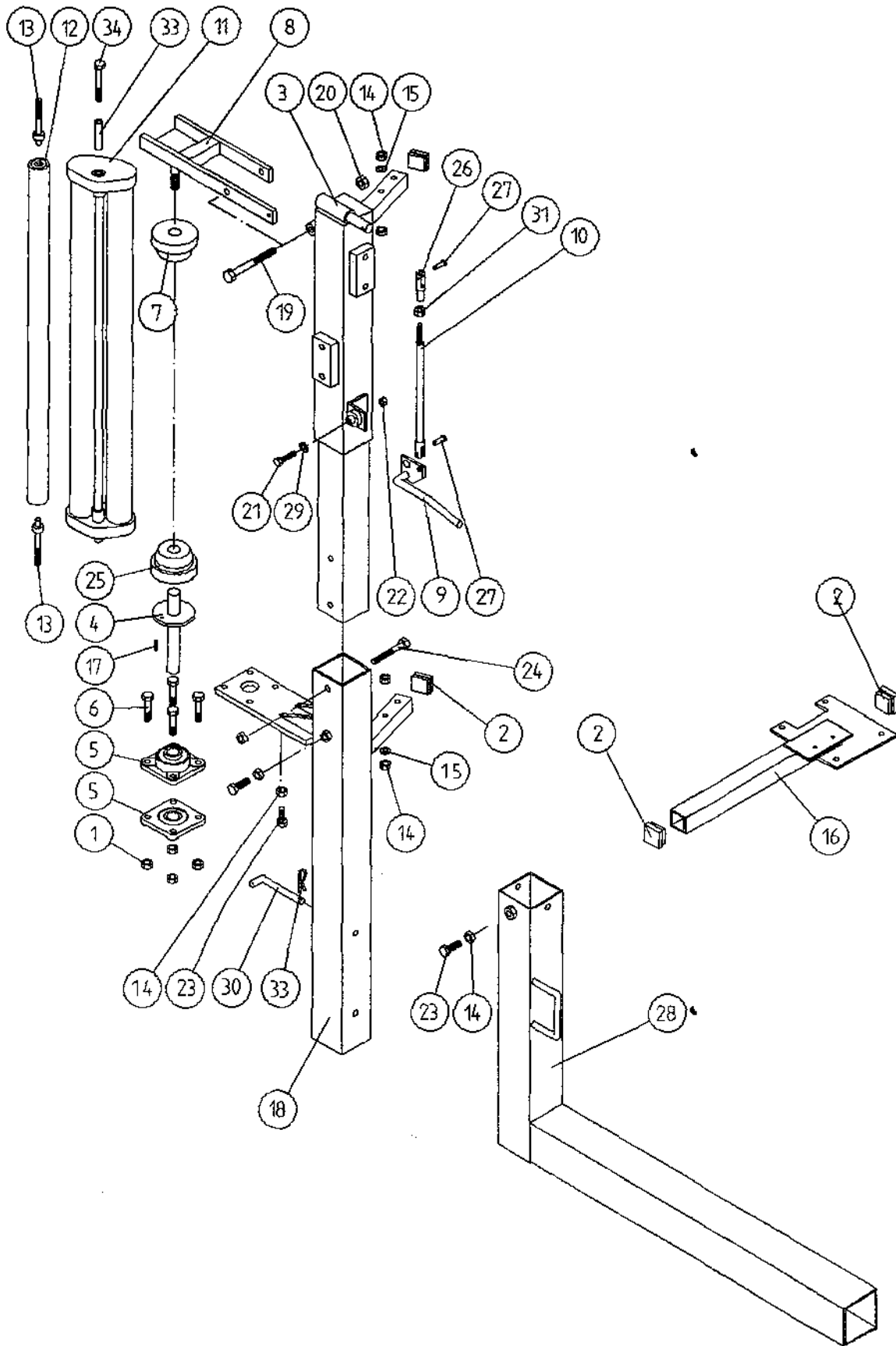
TANCO AUTOWRAP 250S MODEL 1996

FILM DISPENSING SYSTEM

PARTS LIST

ITEM NO.	DESCRIPTION	QTY.	PART-NO
1.	M10 LOCKNUTS	4	Z23-10
2.	PLASTIC CAPS (T SUIT 40 X 40 X 3 RHS)	4	Z32-07
3.	DISPENSER MOUNTING (UPPER)	1	WD60-DMUH
4.	FILM SPOOL ASSEMBLY	1	WD60-SPO
5.	1" DIA FLANGE BEARING C/W CAM LOCK	1	Z06-48EC
6.	M10 HEX HD BOLT X 50MM LONG	4	Z26-066B
7.	CONE (TOP) C/W BALL BEARING	1	Z06-45-01
8.	CLAMP ASSEMBLY	1	WD60-DMCA
9.	LEVER ASSEMBLY	1	WD60-DMLA
10.	LINK ASSEMBLY	1	WD60-DMLK
11.	FILM DISPENSER UNIT MK 7 (70% STRETCH)	1	D614
12.	SLAVE ROLLER SHORT	1	Z06-SR95-S
13.	SLAVE ROLLER PIVOT	2	WD64-SRP
14.	M12 HEX NUTS	7	Z18-12
15.	12mm DIA SPRING WASHER	2	Z12-02-12
16.	SPOOL VALVE MOUNTING PLATE ASSEMBLY	1	WD63-SVM
17.	1/4" DIA TENSION X 3/4" LONG	1	Z03-20-062
18.	DISPENSER MOUNTING (LOWER)	1	WD60-DMLH
19.	M12 HEX HD BOLT X 130M LONG	1	Z26-094B
20.	M12 LOCKNUT	3	Z23-12
21.	M8 HEX HD BOLT X 35MM LONG	1	Z26-042S
22.	M8 LOCKNUT	1	Z23-08
23.	M12 HEX HD SET X 30MM LONG	3	Z26-082S
24.	M12 HEX HD BOLT X 100MM LONG	1	Z26-092B
25.	CONE (BOTTOM)	1	Z06-45-02
26.	CLEVIS (M10)	1	Z49-335
27.	PIN (5/16" DIA) C/W CLIP	2	Z49-337
28.	4MM "R" CLIP	1	z36-02
29.	8mm DIA MUD FLAP WASHER	1	Z11-02-081
30.	BISSEL PIN X 110M LONG	1	WD60-874
31.	5/16" UNF HEX NUT	1	Z15-05
32.	1" DIA FLANGE BEARING	1	Z06-48

TANCO AUTOWRAP 250S7 MODEL 1996
 FILM DISPENSER SYSTEM



FILE NAME WD64-PL31

WD64-PL31

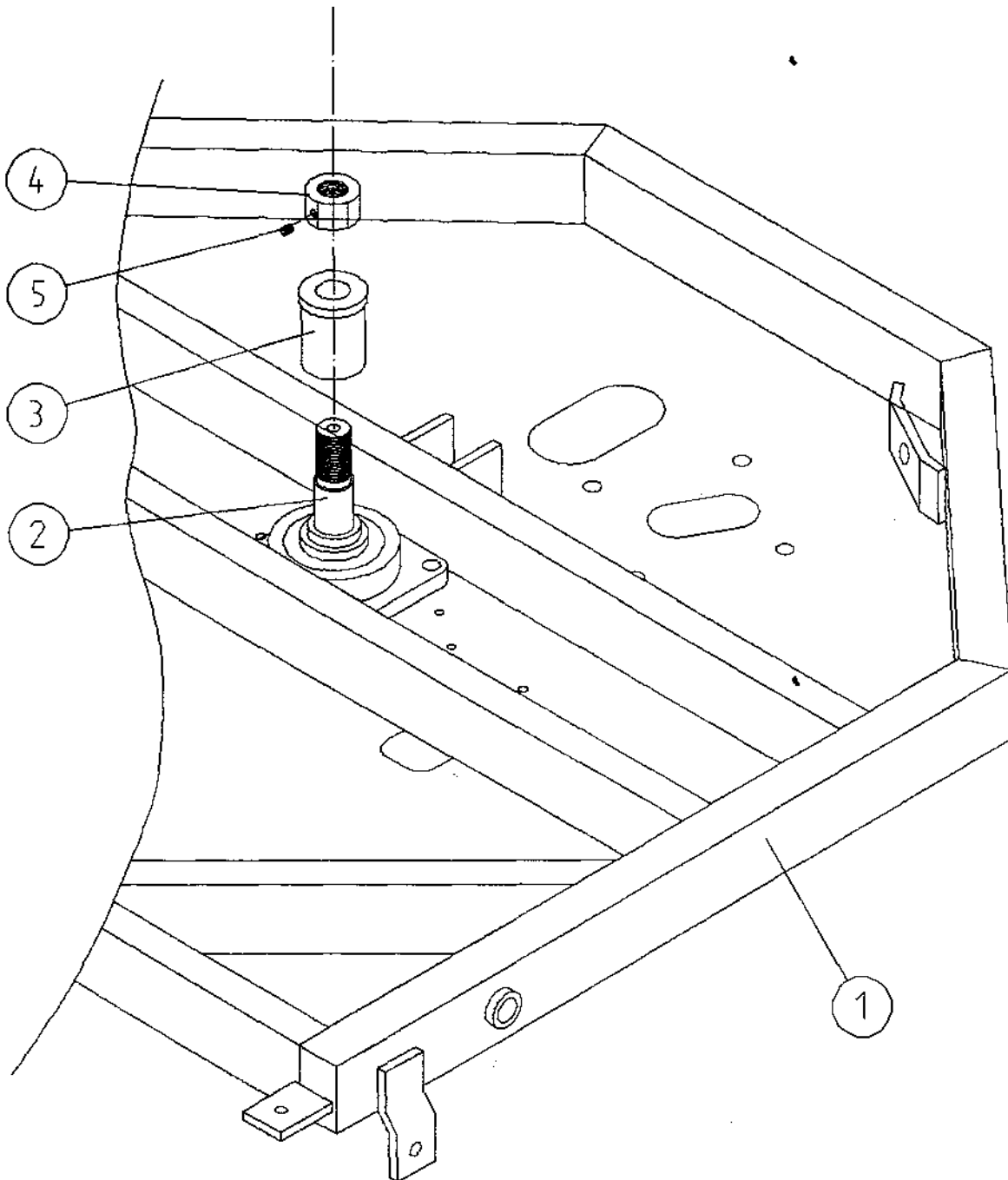
TANCO AUTOWRAP 250S7 MODEL 1996

FILM DISPENSING SYSTEM

PARTS LIST

ITEM NO.	DESCRIPTION	QTY.	PART-NO
1.	M10 LOCKNUTS	4	Z23-10
2.	PLASTIC CAPS (T SUIT 40 X 40 X 3 RHS)	4	Z32-07
3.	DISPENSER MOUNTING (UPPER)	1	WD60-DMUH
4.	FILM SPOOL ASSEMBLY	1	WD60-SPO
5.	1" DIA FLANGE BEARING C/W CAM LOCK	1	Z06-48EC
6.	M10 HEX HD BOLT X 50MM LONG	4	Z26-066B
7.	CONE (TOP) C/W BALL BEARING	1	Z06-45-01
8.	CLAMP ASSEMBLY	1	WD60-DMCA
9.	LEVER ASSEMBLY	1	WD60-DMLA
10.	LINK ASSEMBLY	1	WD60-DMLK
11.	FILM DISPENSER UNIT MK 9 (70% STRETCH)	1	D616
12.	SLAVE ROLLER LONG	1	Z06-SR95-L
13.	SLAVE ROLLER PIVOT	2	WD64-SRP
14.	M12 HEX NUTS	7	Z18-12
15.	12mm DIA SPRING WASHER	2	Z12-02-12
16.	SPOOL VALVE MOUNTING PLATE ASSEMBLY	1	WD63-SVM
17.	1/4" DIA TENSION X 3/4" LONG	1	Z03-20-062
18.	DISPENSER MOUNTING (LOWER)	1	WD60-DMLH
19.	M12 HEX HD BOLT X 130M LONG	1	Z26-094B
20.	M12 LOCKNUT	3	Z23-12
21.	M8 HEX HD BOLT X 35MM LONG	1	Z26-042S
22.	M8 LOCKNUT	1	Z23-08
23.	M12 HEX HD SET X 30MM LONG	3	Z26-082S
24.	M12 HEX HD BOLT X 100MM LONG	1	Z26-092B
25.	CONE (BOTTOM)	1	Z06-45-02
26.	CLEVIS (M10)	1	Z49-335
27.	PIN (5/16" DIA) C/W CLIP	2	Z49-337
28.	4MM "R" CLIP	1	z36-02
29.	8mm DIA MUD FLAP WASHER	1	Z11-02-081
30.	BISSEL PIN X 110M LONG	1	WD60-874
31.	5/16" UNF HEX NUT	1	Z15-05
32.	1" DIA FLANGE BEARING	1	Z06-48
33.	SLEEVE	1	D52012-95
34.	M12 HEX HD BOLT X 80MM LONG	1	Z26-0901B

TANCO AUTOWRAP (1996) TURNTABLE LOCKING ARRANGEMENT



FILE NAME: WD 64 - PL41

WD64 PL41

TANCO AUTOWRAP (1996)

TURNTABLE LOCKING ARRANGEMENT

PARTS LIST

ITEM	DESCRIPTION	QTY	PART NO
1	UNDERSIDE OF TIPPING FRAME	1	WD64-TF
2	TURNTABLE CENTRE SHAFT	1	WD64-002
3	SPINDLE SPACER	1	WD64-SS
4	1 1/4" UNC HEX NUT	1	Z18-300
5	M8 GRUB SCREW X 6MM LONG	1	Z28-007

FAULT FINDING

PROBLEMS.	REMEDY.
1. Drive Roller and Bale belt not driving	Check and replace shear Pins in sprocket on drive roller.
2. Film Breaking	Wash off dispenser and slave rollers. Change roll of film. Use recommended films only.
3. Film not wrapping evenly on bale.	Adjust film mast so centre of film roll is aligned with centre of bale .
4. Film Tearing on Ramp.	Check for sharp edges and remove.
5. Bale Skidding on Ramp.	Fit Hessian Bag or piece of carpet to Ramp.
6. Film Dispenser not Pre-Stretching Film.	Check that both Rollers turn when one is turned by hand. If not, fit new gears or replace unit.
7. Tyres coming off 4" platform Support Wheels.	Replace Wheels - Reduce speed below 30 r.p.m. - Do not grease path of wheels on platform. Check that bale does not get trapped between arms and turntable when being loaded. If this happens lower arm and start again.
8. Hydraulic Bale Ramp not returning to raised position after tipping off bale.	See instructions for recharging hydraulic cylinder.
9. Bale Belt Tracking Adjustment	
(i)	Ensure vertical rollers (plastic) are in tight on the bale. Remember that the bale will reduce in size during wrapping and, on the round bales in particular, the corners will become rounded so that the bale will tend to move sideways due to centrifugal forces. Now, if the plastic rollers are too far apart, the bale will move against one of the plastic rollers causing the belt to move in the opposite direction. Always adjust the vertical plastic rollers so that they keep the bale central on the belt.
(ii)	Ajust bale stop on lift arm so that bale is loaded centrally onto platform.
(iii)	Check that bale belt is fitted so arrow points in direction of travel.
(iv)	Check that both 8" rollers underneath the bale belt are parallel to each other. Remember the golden rule - a belt will always move up a slope: So, if the belt continually moves to our side, adjust idler roller to a narrower setting on the opposite side to which the belt travels.
(v)	Check that gripface strips are securely fixed to the roller and have not moved out of alignment.
(vi)	Check that is the same measurement each side by running a string around the belt and measuring it. If one side is longer than the other replace the belt.

EC DECLARATION OF CONFORMITY

according to Directives 89/392/336/EEC
as amended

Manufacturer

TANCO ENGINEERING CO. LTD.
BAGENALSTOWN
CO. CARLOW
IRELAND

Certifies that the following product:

AUTOWRAP

MODEL 250S

SERIAL No. D2000 - D3000

To which this declaration relates, corresponds to the essential requirements of
the Directive 89/392/336/EEC as amended.

To conform to these essential health and safety requirements, the provisions of the
following harmonized standards were particularly considered:

EN 292 - 1,2 , EN 294 , EN 1152 , prEN 703 , prEN 811 , prEN 1553 , prEN 982.

DATE 01-01-96

SIGNATURE

Alfred A. Cox
ALFRED A. COX, TECHNICAL DIRECTOR